

Poacher Line



Annual Review 2022



Linking City, Coast and Countryside

From the Chair . . .

This has been a relatively quiet time for the Poacher Line, as we did not have a partnership officer in post for some nine months after Jo Andrews left last April. The long delay was for reasons beyond our control. Happily the recruitment process was completed and we welcomed our new officer Gin Fidlin, who is very enthusiastic and has some great ideas and plans for our line. Alongside Gin we look forward to exciting future years for the Poacher Line.

Along the length of the line, from Boston to Bottesford and from Heckington to Radcliffe, our stations are enhanced by the gardens maintained and looked after by the caring work of our station volunteers, bringing both a touch of colour and a welcoming ambience to the platform. It is our aim to encourage the establishment of further adoption groups for other stations along the Poacher Line during the year.

The year was brightened by the success of Sleaford station at the National Rail Heritage Awards. This substantial project had two aspects, firstly the repainting of the station in the green and cream heritage colours of the pre-1948 LNER, and secondly the fitting out of our community meeting room on platform two which is available for use by voluntary groups. Several local organisations are making use of this new facility and are finding it to be useful and practical. Commemorative plaques have been installed at the station to celebrate success in the two awards competitions in which the station was entered.

As always none of what has been and what will be achieved by the Partnership could be accomplished without the encouragement and ongoing practical and financial support of our several sponsors, both in the rail industry and in local and national government. Our thanks to them as always.

Peter Roberts MBE
Honorary Chairman
Poacher Line Partnership



Annual Review 2022

2022 was a challenging year for the partnership, operating without an officer for eight months. Despite the vacancy the partnership maintained connection with their station adopters and achieved some projects with the help of the EMR Community Rail team.

Try the Train

Working with Lincolnshire County Council's (LCC) Young People's Learning Provision (YPLP) to deliver a programme of 'Try the Train' trips to groups in Boston & Grantham. YPLP teach core subjects and life skills to young adults aged 16-19.

The programme aimed to teach these young adults how to access and use the railway safely as they were about to embark on their next phase of life with starting work or moving into higher education. The partnership designed a workbook and working with EMR Ambassador Kaye, who also provided complimentary train tickets to Nottingham station, they received a rail safety presentation, learned how to purchase tickets, how to seek assistance if required and to use the station safely.



Boston YPLP were some distance from the station and CallConnect, LCCs Demand Responsive bus provided transport to and from the station at Boston, highlighting the possibility of addressing the 'last mile' problem and making the journey completely sustainable.

YPLP Grantham had hoped to become the station adopters at Grantham station and both groups expressed an interest in completing artwork at Grantham & Boston stations.

Boston Station Improvements

Due to the continued efforts of the amazing adopter group at Boston, the station and its surroundings are looking fantastic. The group have wanted to address an area on Platform 1 which was an eyesore, overgrown and filled with rubbish. With a grant from EMR CRF work was completed to clear the area ready for a garden to be created, designed by the adopters.



Poacher Line



Sleaford Station Improvements

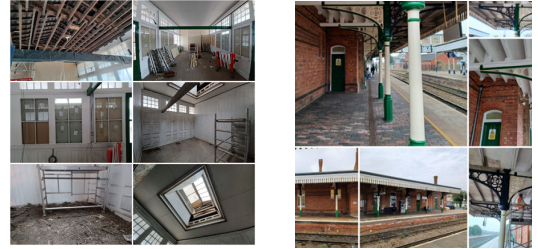
The Old Waiting Room

2022 was a busy time at Sleaford with the renovations of the Old Waiting Room finally starting.

Work started off at pace but was slowed down by the discovery of a large pigeon infestation in the rafters. This resulted in extra work being required and a slip in the works programme. The work to renovate The Old Waiting Room into a new community room and to paint the whole of the station in LNER heritage colours of Green and Cream was finally completed in late spring.

Work to create the community room and to repaint the station was made possible by kind funding by EMR, Railway Heritage Trust, Community Rail Network and CrossCountry Trains.

The Old Waiting Room was opened in the Summer by Cllr Richard Wright, leader of North Kesteven District Council - thank you to everyone who helped and supported the project.



Poachers Patch

The allotment had its finishing touches with the installation of the information boards and seat benching. The tree also had a trim and all is looking fantastic. The allotment continues to be looked after by Rainbow Stars.

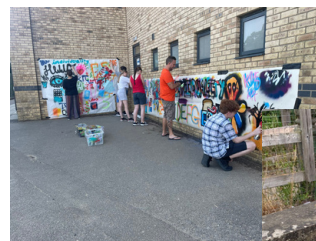


Futures Week:

Sleaford Subway Art

As part of Futures Week, Kaye Robinson EMR Ambassador, worked with students from St. Georges Academy Sleaford to brighten up the second half of the subway in Sleaford.

The partnership successfully applied for a grant from the EMR CDF to work with Imageskool to complete this project and the results speak for themselves. With the opposite side completed in 2021 by the ESOL students from Nottingham, the subway is now a much friendly place to use.



Poacher Line



Adopter News

The adopters continued to work hard to keep our stations tidy and safe and we would like to say a huge thank you to everyone. Here are some images from the year.



Skegness



Bottesford



Heckington



Sleaford



Boston

Radcliffe Station Improvements

The Friends of Radcliffe Station were busy in 2022. They successfully submitted a funding bid from the EMR SSCDP to install solar lighting on Station Approach, new bench seating and information board. Congratulations to the adopters, well done!



Jubilee Train Trip to Skegness

The Friends of Radcliffe Station have successfully held a Bucket & Spade trip to Skegness for several years. This year with no officer in post to assist, with the help of Kaye from EMR, the group organised a Jubilee celebration trip and the day was enjoyed by all



New Planters

With the help of funding from Community Rail Network and EMR, new planters were purchased for Sleaford, Ancaster & Swineshead Stations. The planters really enhance the stations and make it a much nicer experience for passengers.



Boston in Bloom

The station was once again included in the judging route and the adopters worked hard to make sure the station looked in tip top condition. We were pleased to hear that Boston in Bloom was awarded Gold! Congratulations!



Poacher Line



Dementia Friendly Trip

Kaye from EMR Community Rail took a group who were living with dementia on a train trip from Boston to Skegness. The aim of this trip was to identify the challenges to those who are living with dementia and using the railway. This trip came about from earlier work with the Boston Dementia Champions who would like to see the Poacher Line become dementia friendly.

Awards

Community Rail Awards

We were delighted to have been shortlisted in two categories in the 2022 awards. One for 'Most Enhanced Railway Space' for the Sleaford Station development and 'Community Creative Project and Station Arts' for our Netherfield Bridge art project. We were not lucky on the night, but competition was fierce and congratulations to all the winners, those shortlisted and everyone involved in the projects.



National Railway Heritage Awards

In the summer we were thrilled to find out we had been shortlisted in the National Railway Heritage Awards for our Sleaford Station Restoration project. We were honoured to have won The BAM Nuttall Partnership Award at a glittering ceremony in December. The plaque now sits proudly for all to admire on Platform 1. Special thank you to Andy Savage for your help and advice on this amazing transformation.



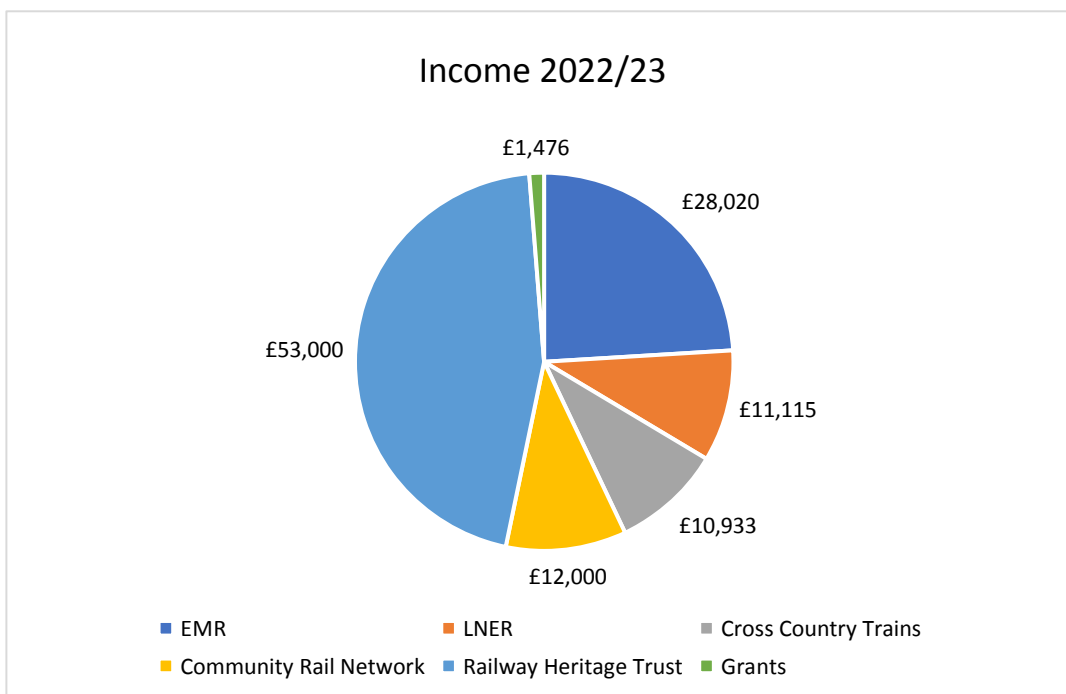
FINANCIAL REPORT

INCOME 2022/23

EMR	£28,020
LNER	£11,115.40
Cross Country Trains	£10,932.54
Community Rail Network	£12,000
Railway Heritage Trust	£53,000
Grants	£1,475.50
Carry forward from 2021/22	£78,127.91
Total	£116,563.44

OUTGOINGS 2022/23

Officer Travel	£498.80
Project Outlay	£86,105
Marketing	£2,895.00
TOTAL	£89,962.80
Carry Forward to 23/24	£104,728.55



Poacher Line



Annual Review 2022

Get in Touch

Want to get involved with the Poacher Line or learn more?
We'd love to hear from you...

✉ poacherline@lincolnshire.gov.uk

🌐 poacherline.org.uk 📞 01522 553022

f Poacher Line Community Rail Partnership

🐦 @Poacherline 📷 @Poacherline



Community Rail

Accredited Partnership

Thank you to all of our partners for your continued support

