

News from the Poacher Line



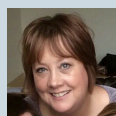
Welcome to our first Newsletter!

We are thrilled to be able to share with you our first ever newsletter which will be issued bi-annually in Winter and Summer. Here you will be able to catch up on all the progress we have made during the year and get advance notice of planned events (Currently all events for 2021 are on hold due to COVID-19). We would love to hear from you with any news, along with your fabulous pictures! You can email us at poacherline@lincolnshire.gov.uk

Jo Andrews
Community Rail Officer

Meet the Team

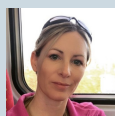
Ever wondered who we are? We are a small, but friendly team who hopefully make a big difference. The Community Rail Officer for the Poacher Line is Jo, and she looks after the day to day running of the partnership. Jo is supported by Kaye & Donna from the East Midlands Railway Community Rail team, and Paul from the Community Rail Network. Peter is the partnership chair and is a source of considerable knowledge surrounding rail and bus and supports the day to day running of the partnership



Jo



Kaye



Donna



Paul



Peter

Continuity Connections

Our wonderful artwork by Alisha Miller was unveiled on Platform 2 at Boston station in November. It showcases the Poacher Line from Nottingham to Skegness and really demonstrates how the railway connects communities. Staff, passengers and local residents have commented on how much it enhances the station. Check it out for yourself when you are next at the station!



Issue 01: Winter 21

New station adoption group at Boston!

Despite the difficulties of COVID-19 we managed to recruit some amazing volunteers to look after Boston and the neighbouring stations. Boston was in need of some TLC and after a successful Facebook campaign we were delighted to welcome 17 volunteers who will look after six stations from Swineshead to Skegness. They have already made a massive difference at the station, installing 4 planters on Platform 1 and staff and passengers have commented on how litter free the station looks.

Once restrictions are lifted in 2021 they have plans to create a garden area on Platform 1 and install further planters on Platform 2. In December, working with Boston Fire service, a large water butt was installed on Platform 2 which will aid with their watering! A warm welcome to the Poacher Line!



poacherline.org.uk



poacherline@lincolnshire.gov.uk



[@poacherline](https://www.instagram.com/poacherline)

News from the Poacher Line



Community Rail Awards

We were thrilled that our hard work was recognised at the Community Rail Awards which were held virtually in December. We were delighted to be placed third in the Community Arts Scheme category for our inter-generational work with South Nottinghamshire Academy and the Manor Care Home in Radcliffe, and EMR Community Rail Ambassador Kaye won first place for her picture "Age is just a number". Bottesford, Radcliffe & Heckington were also placed in the Silver band of "It's Your Station". Well done to all of our shortlisted and winning entries.



My Little Allotment

We are making great progress over at Sleaford station and we are looking forward to welcoming our community groups back in 2021 to start planting. Look out for news of a great competition to name the garden which will be revealed during the grand opening late spring by the Mayor of Sleaford.



Coming up later in the year..

We have some big projects planned for 2021 and our Flag Ship project will be the development of the old waiting room on the island Platform at Sleaford station. We are just conducting the feasibility study to see if we can bring this unloved building back into the community as an education and meeting room. Keep updated with our progress via the projects page on our website later in the year.

- Community Art Project - Netherfield Bridge
- Poacher PLUS - Integrated travel offer with CallConnect Bus
- Improvements at Thorpe Culvert Station

This is where we would love to hear from you with any news. Please send us your stories from the station along with some pic's. poacherline@lincolnshire.gov.uk



Don't forget to follow us on social media:



Community Rail
Accredited Partnership

The Poacherline is supported by

